

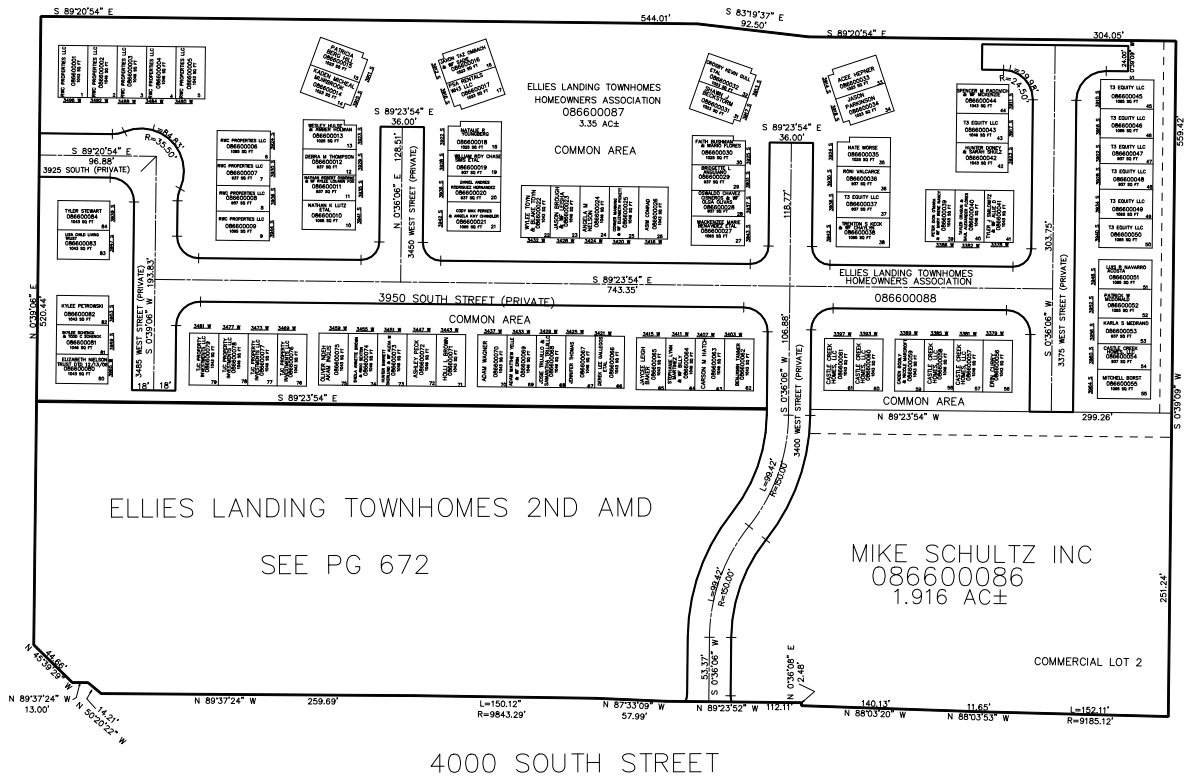
PART OF THE SW. 1/4, OF SECTION 3, T.5N., R.2W., S.L.B. & M.  
**ELLIE'S LANDING TOWNHOMES 1ST AMENDMENT**

IN WEST HAVEN CITY

TAXING UNIT: 324

SCALE 1" = 80'

SEE PAGE 34



4000 SOUTH STREET

SEE PAGE 34

10' UTILITY & DRAINAGE EASEMENTS EACH  
SIDE OF PROPERTY LINES AS INDICATED  
BY DASHED LINES EXCEPT AS OTHERWISE  
SHOWN.

FOR COMPLETE ENG DATA SEE  
ORIGINAL DEDICATION PLAT IN  
BOOK 89, PAGE 8-10 OF RECORDS.